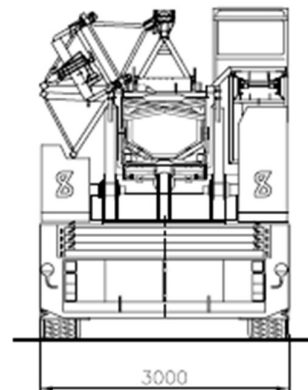
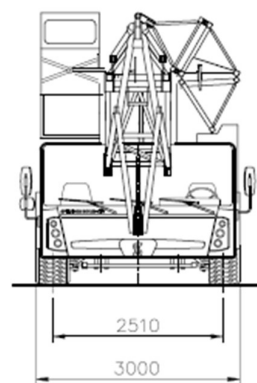
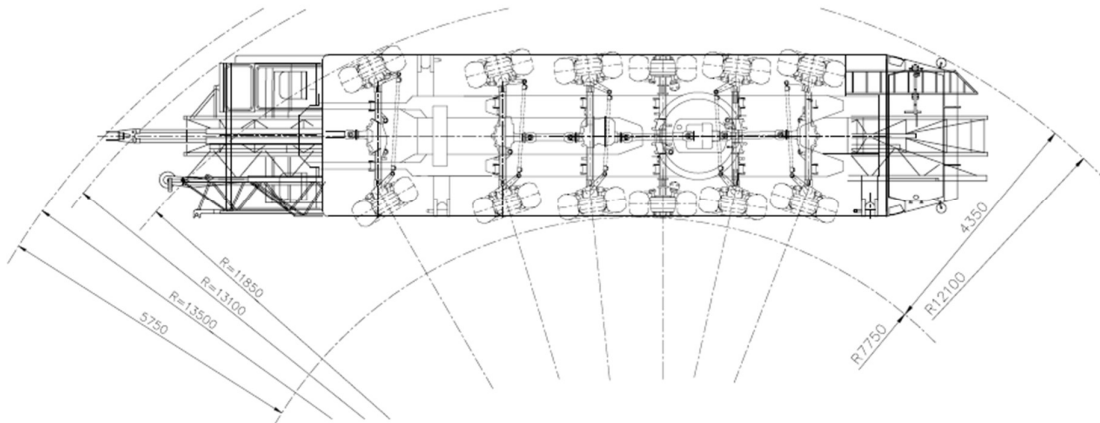
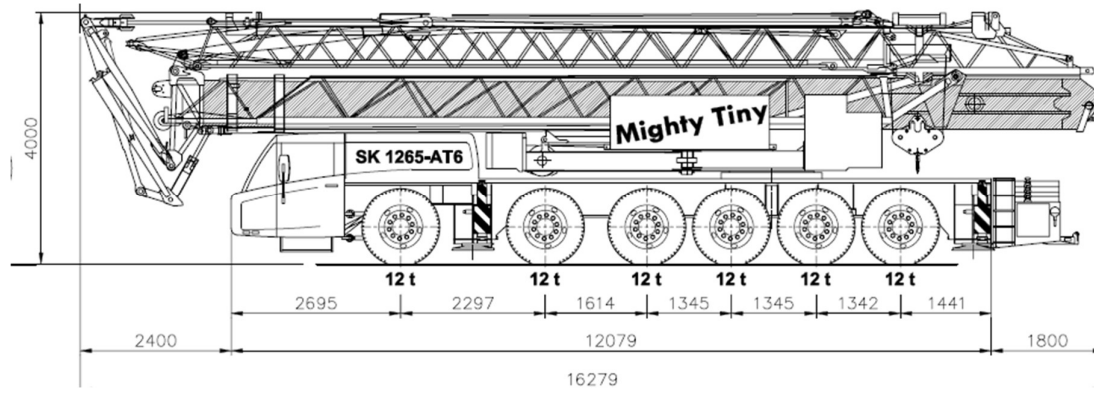
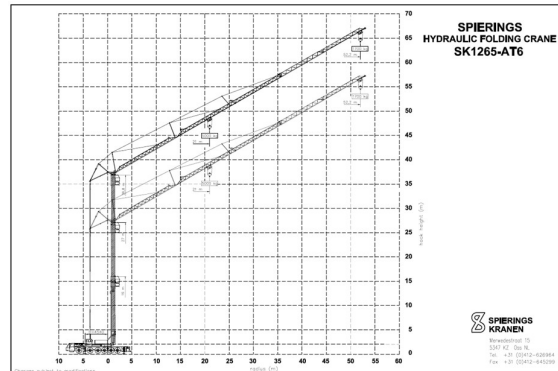
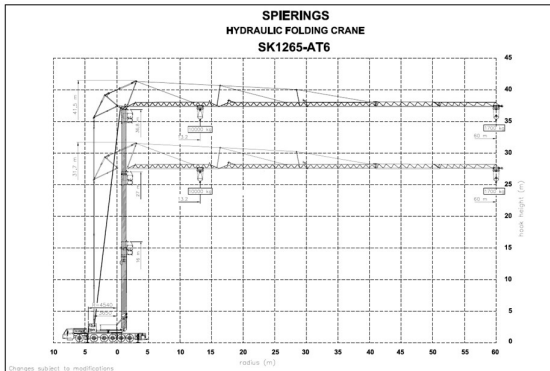
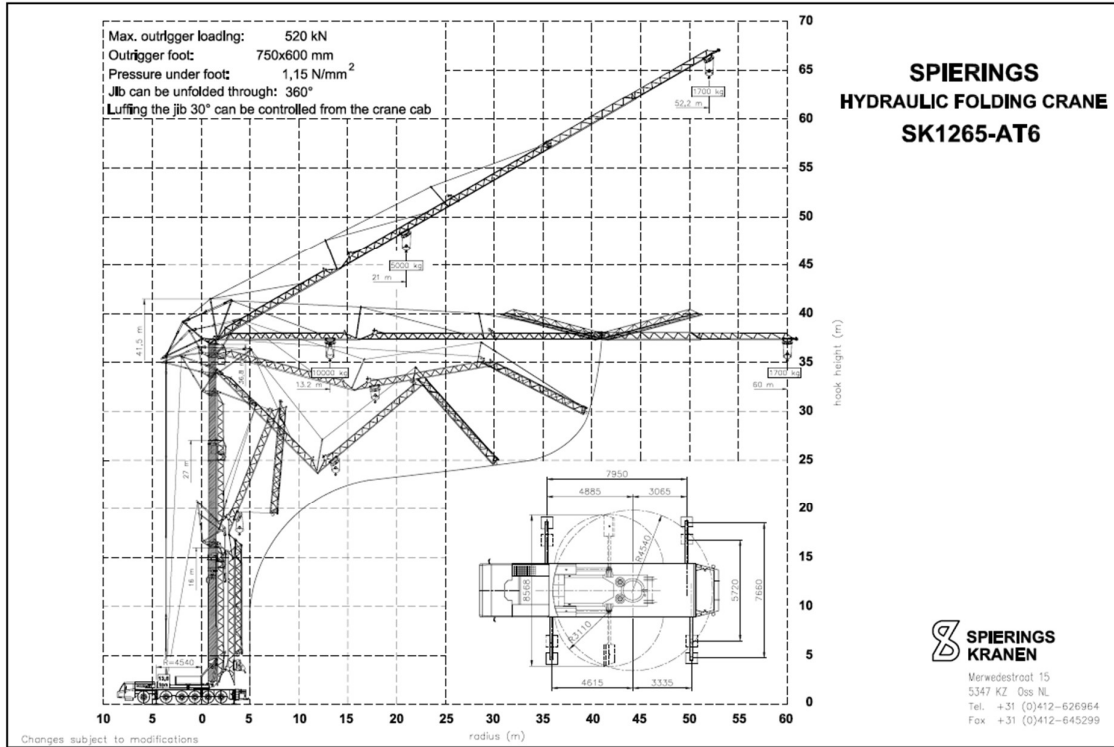




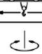

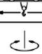

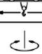
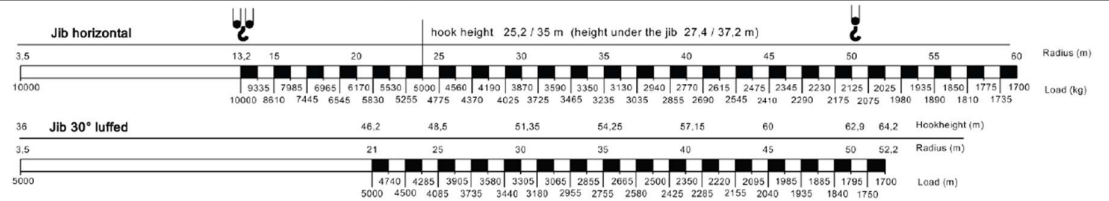
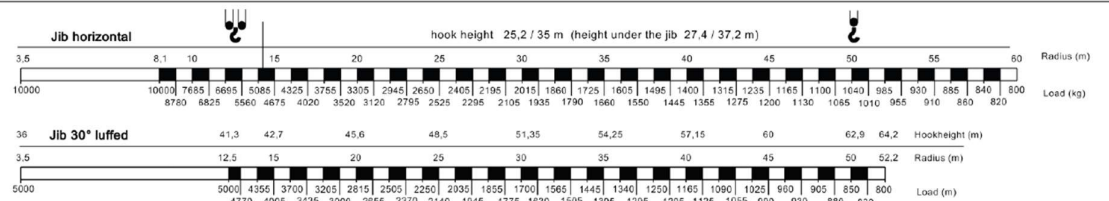
**SPIERINGS SK1265-AT6**



## SPIERINGS SK1265-AT6



## SPIERINGS SK1265-AT6

 <p><b>SPIERINGS CRANES</b></p>	<p><b>Make: SPIERINGS      Type: SK1265-AT6</b></p> <p><b>Crane specification      (Jib length 60 m)</b></p>													
<p>Serial number <input style="width: 100%;" type="text"/></p> <p>Year of construction <input style="width: 100%;" type="text"/></p>	<p>Crane group : A3 as per FEM 1.001</p> <p>Loadspectrum : Q1 as per FEM 1.001</p> <p>Classification : U4 as per FEM 1.001</p> <p>Stability : as per FEM 1.001</p>	<table border="1" style="width: 100%; border-collapse: collapse;"> <tr> <td style="text-align: center;"><b>Max. load</b></td> <td style="text-align: center;"><b>Max.radius with max. load</b></td> <td style="text-align: center;"><b>Max. capacity</b></td> <td style="text-align: center;"><b>Max. jib length</b></td> </tr> <tr> <td style="text-align: center;"><b>10,0 tonne</b></td> <td style="text-align: center;"><b>13,2 m</b></td> <td style="text-align: center;"><b>132 tm</b></td> <td style="text-align: center;"><b>60 m</b></td> </tr> </table>	<b>Max. load</b>	<b>Max.radius with max. load</b>	<b>Max. capacity</b>	<b>Max. jib length</b>	<b>10,0 tonne</b>	<b>13,2 m</b>	<b>132 tm</b>	<b>60 m</b>				
<b>Max. load</b>	<b>Max.radius with max. load</b>	<b>Max. capacity</b>	<b>Max. jib length</b>											
<b>10,0 tonne</b>	<b>13,2 m</b>	<b>132 tm</b>	<b>60 m</b>											
<p><b>Speeds</b></p> <table border="1" style="width: 100%; border-collapse: collapse;"> <tr> <th colspan="2">Jib horizontal / jib 30° luffed</th> </tr> <tr> <td style="text-align: center;">m/min</td> <td style="text-align: center;">kg</td> </tr> <tr> <td style="text-align: center;">15</td> <td style="text-align: center;">10000</td> </tr> <tr> <td style="text-align: center;">30</td> <td style="text-align: center;">5000</td> </tr> <tr> <td style="text-align: center;">45</td> <td style="text-align: center;">2500</td> </tr> <tr> <td style="text-align: center;">75</td> <td style="text-align: center;">0</td> </tr> </table>	Jib horizontal / jib 30° luffed		m/min	kg	15	10000	30	5000	45	2500	75	0	<p>All motions with hydraulic proportional controls.</p> <p>Luffing the jib 30° can be controlled from crane cab or by remote control.</p> <p>Crane can be driven in its erected position under special conditions (refer user guide).</p>	<p>Continuous slewing of the crane (360°) with the outriggers out and support pads down.</p> <p>The crane should be luffed in at wind force 9 (Bf) (21 m/sec) or when not in use for a longer period.</p> <p>Operating temperature range from -15°C till +40°C</p>
Jib horizontal / jib 30° luffed														
m/min	kg													
15	10000													
30	5000													
45	2500													
75	0													
<table border="1" style="width: 100%; border-collapse: collapse;"> <tr> <td style="text-align: center;">  </td> <td style="text-align: center;">  </td> </tr> <tr> <td style="text-align: center;">0 - 70 m/min</td> <td style="text-align: center;">0-0,7 r/min</td> </tr> </table>			0 - 70 m/min	0-0,7 r/min	<p>Counterweight Crane : 12600 kg.</p> <p>Rated lifting capacity is net capacity.</p> <p>Max. line pull force : 2500 kg.</p> <p>2 parts of line : 5000 kg - 1700 kg</p> <p>4 parts of line : 10000 kg - 5000 kg</p> <p>Sail area of the load max.: 1.0 m²/ton.</p>	<p>Outriggers positioned according to lifting chart</p> <p>Outrigger support base : 7.95 x 7.66 m.</p> <p>Operation allowed up to wind force 7 (14 m/s).</p> <p>Outrigger support base : 7.95 x 5.72 m.</p> <p>Operation allowed up to wind force 7 (14 m/s).</p> <p>Max. outrigger force: 520 kN.</p>								
														
0 - 70 m/min	0-0,7 r/min													
<p><b>Lifting chart      Outrigger support base : 7,95 m x 7,66 m</b></p>														
														
<p><b>Lifting chart      Outrigger support base : 7,95 m x 5,72 m</b></p>														
														
<p>changes subject to modifications</p>														